

Noah's Flood and Sterling Hill Zinc Mine Museum



Nathan Smith

Agenda

A large satellite dish antenna is the central focus of the image, mounted on a tall metal structure. The dish is white and curved, pointing towards the upper right. The background is a clear blue sky with some light clouds. In the foreground, there are green bushes and a small brick building with windows. The overall scene is bright and sunny.

- **Biography**
- **Overview of Noah's Flood**
- **World and Noah's Flood**
- **Tri-state area and Noah's Flood**
- **Sterling Hill mine and Noah's Flood**
 - Walk through museum
 - Operation
 - Fluorescent minerals

Biography

- **Satellite Communications:**
 - Systems Engineer
 - Testing/Repairing terminals
 - Writing Specifications/Work Statements
 - Technical Representative
 - Terminal Installations

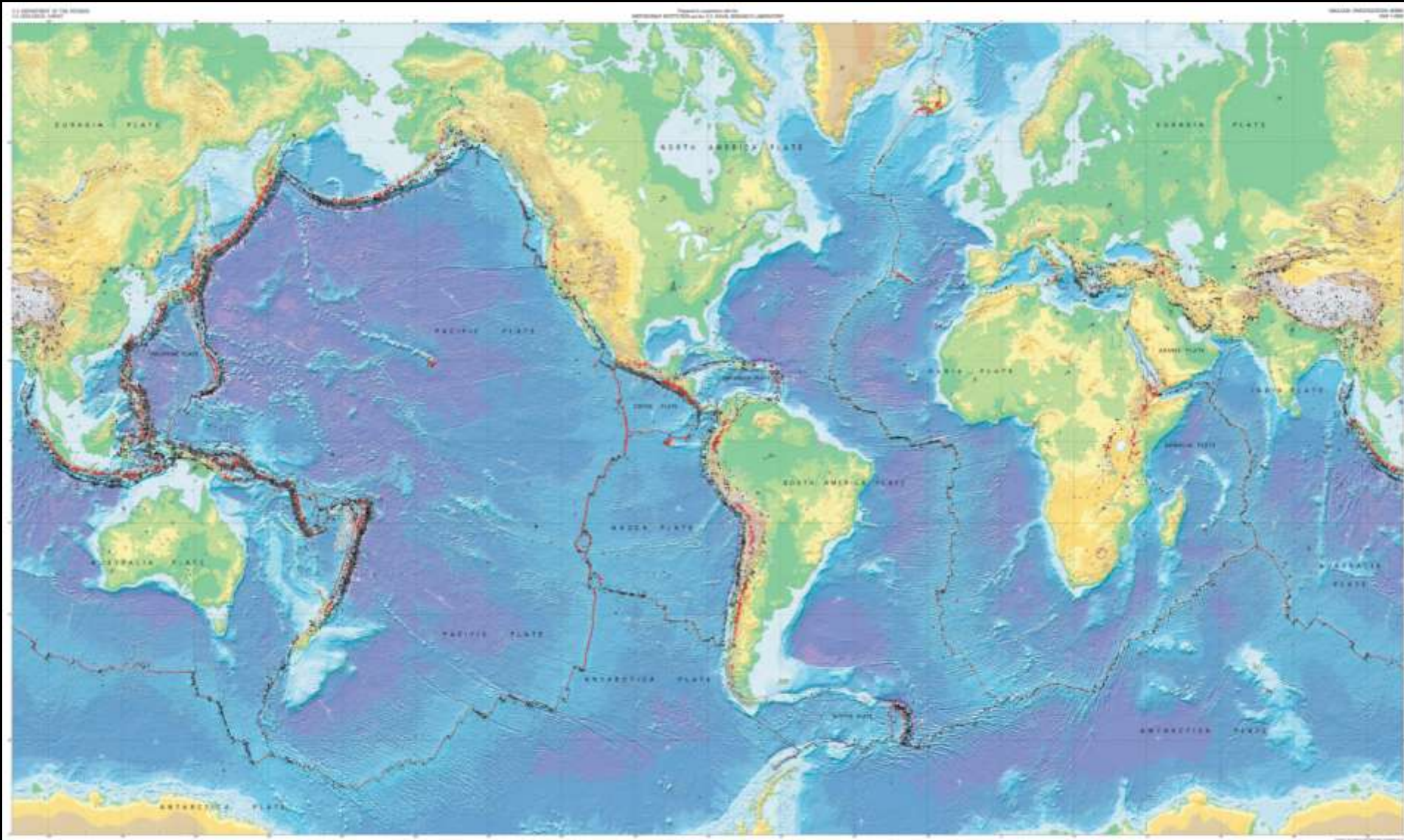


- **Information Assurance:**
 - Strategy Development
 - Interpreting Requirements
 - Found \$1.5M of savings
- **Land Mobile Radio Systems**

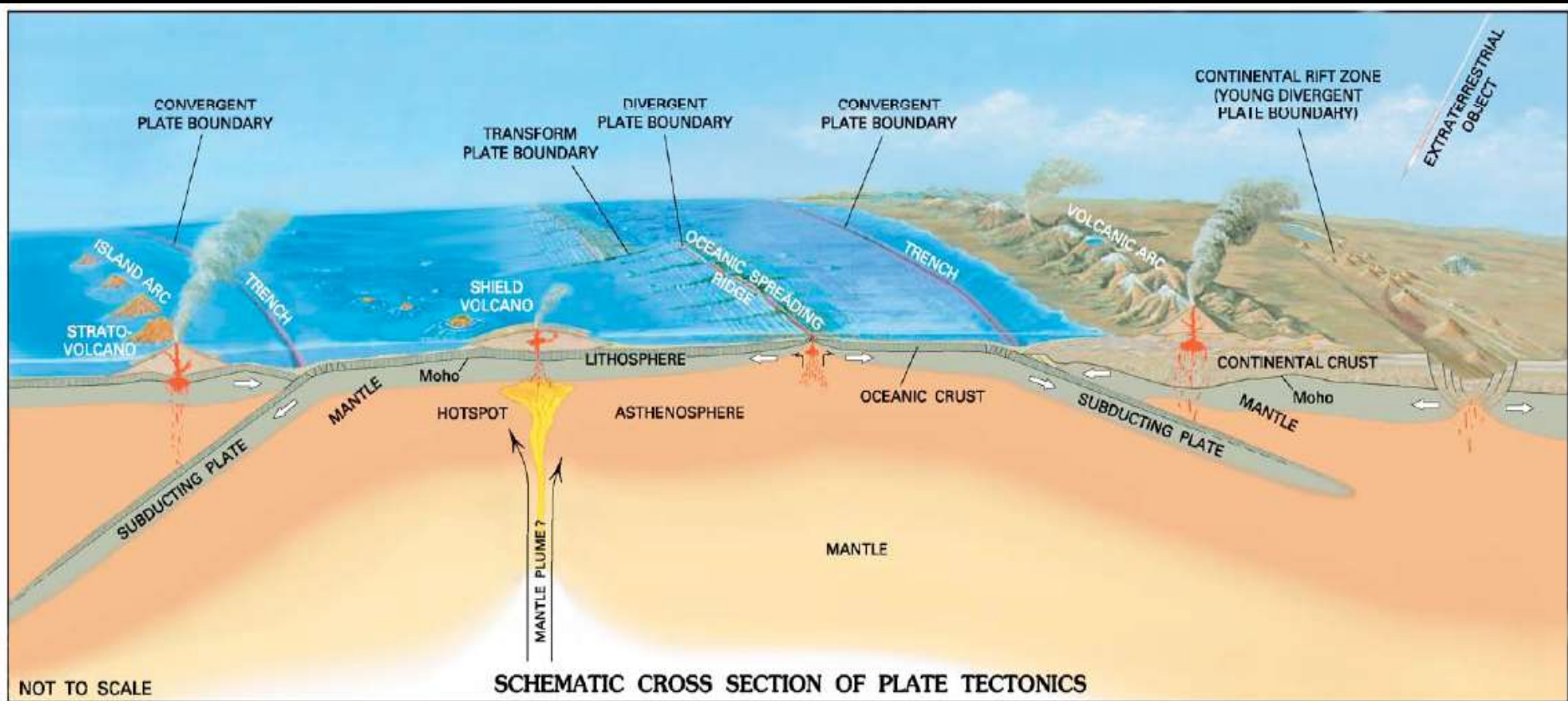
Overview of Noah's Flood

- God instructs Noah to build an Ark (Genesis 6:13–14)
- Noah Constructs the Ark (Genesis 6:20)
- God instructs Noah to prepare to enter the Ark (Genesis 7:1)
- Noah enters Ark, and God shuts door. (Genesis 7:16, 17)
- **Intense rain falls 40 days/nights and the fountains of the great deep opened up (Genesis 7:11, 12)**
- Water covers the earth in the next 110 days and starts to recede. (Genesis 7:17, 24)
- **High mountains covered with water (Genesis 7:20)**
- Ark rests on the mountains of Ararat (Genesis 8:3, 4)
- **Water recedes from off the earth (Psalm 104:5-7)**
- **Post Flood Ice age occurs (Job 37:6)**

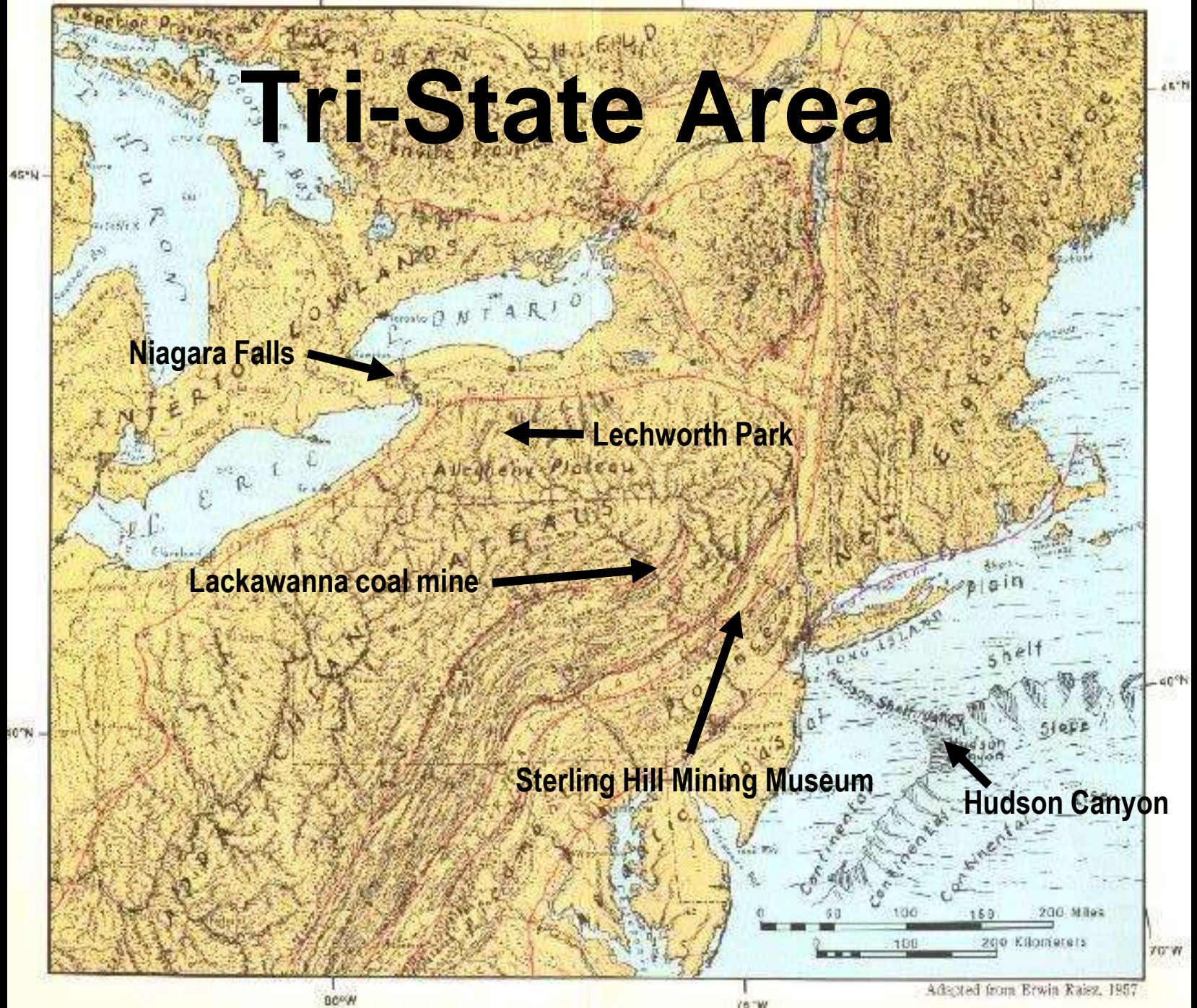
World and Noah's Flood



World and Noah's Flood



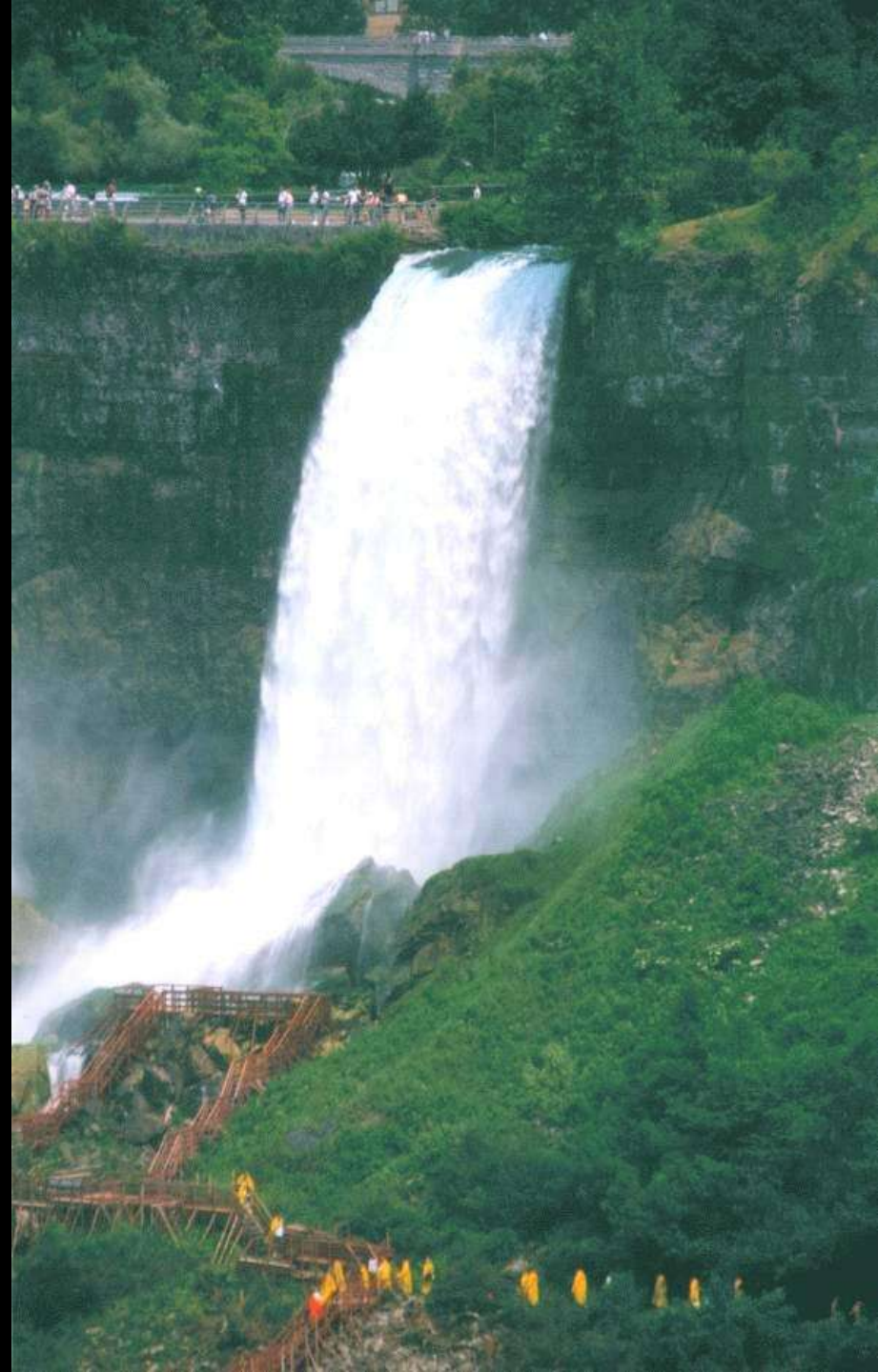
Tri-State Area



Niagara Falls Panorama



Niagara Falls – Bridal Veil



Genesee River





GIFT SHOP OPEN DAILY | **TOURS DAILY**
10:00 AM - 3:00 PM | **AT 1:00 PM**



MINE
TOURS



EXHIB
GIFT

"An Historical Mining Museum"
THE STERLING HILL
MINING MUSEUM





STERLING HILL
ADIT



NOTICE
NO ADMITTANCE
EXCEPT BY PERMIT
SEE SIGNAGE













LET THE OTHER SHIFT WORRY ABOUT IT!



Take Care

- NEVER OPEN THE HEADLAMP
- DON'T USE THE CORD AS A HANDLE—carry the lamp by grasping the top of the battery
- ALWAYS KEEP THE LIGHT BURNING—don't play with the switch
- BE SURE TO TELL THE LAMP ATTENDANT IF YOUR LAMP DOES NOT PERFORM AS WELL AS





Standard
Acetylene
Mine Lamp

THE J. W. BROTHERS COMPANY

Justrite
CARBIDE
LAMP

INVESTIGATE
It's Not Our Fault & You Don't Know
The Baldwin Mine Lamp

Small Acetylene Lamps...
[Illustrations of various lamp models]

Carbide

WIDE LAMP



This can be identified as a gold miner's venterick because it has the enlarged and fluted or hollowed handle known as a "high-grader's handle." Miners working in a mine containing native gold would stick small fragments of gold inside the handle with a bit of candle wax in order to smuggle them out past the mine guards.



Patented examples like this, having a curved-neck hook and a curved handle, were sold between 1870 and 1900 by the Shoshone Hardware Company store in Lake Mead, according to a label here prepared by Anthony Mann. The store was owned at that time by what is today the Ansonia Company.



COBALT
 AND JEWELLER WITH METALWORK
 JOHN W. STUBBS
 Colorado Springs, CO • 1903
 4144 100 3344



BE CAREFUL
EXAMINE YOUR WORKING PLACE WELL BEFORE STARTING TO WORK

WEIGHT LIMIT
MEN

USE
MOISTMAN
MINING

DANGER
DO NOT OPERATE





Bell

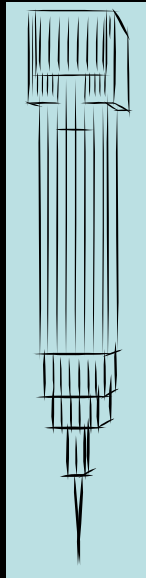


ADIT LEVEL	
HOISTING SIGNALS	
STATION	BELLS
SURFACE	5
ADIT	1-1
100	1-2
500	1-3
400	1-4
500	2-1
600	2-2
700	2-3
800	2-4
900	3-1
1000	3-2
1100	3-3
1100 POCKET	3-2-2
1200	3-4
1300	4-1
1400	4-2
1500	4-3
1600	4-4
1700	5-1
1800	5-2
1900	5-3
2000	5-4
2000 POCKET	5-4-2
WAGG TO TOPPLE	1
STOP OR CLEAR	1
LOWER SLOW	2
HUNT SLOW	2

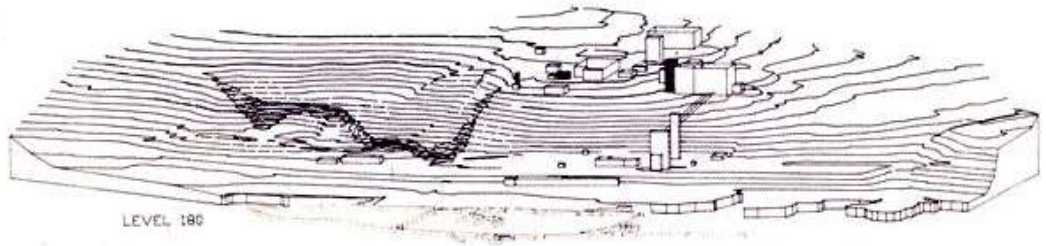
EMERGENCY SIGNAL
3 BELLS
FOLLOWED BY THE
LEVEL SIGNAL



Drawing of Mine



1100



LEVEL 180

LEVEL 340

LEVEL 430

LEVEL 500

LEVEL 600

LEVEL 700

LEVEL 800

LEVEL 900

LEVEL 1000

LEVEL 1100

LEVEL 1200

LEVEL 1300

LEVEL 1400

LEVEL 1500

LEVEL 1600

LAYER 1680

LEVEL 1750

1850

LEVEL 1850

LEVEL 1950

LEVEL 2050

LEVEL 2150

LEVEL 2250

LEVEL 2350

LEVEL 2450

2550

LEVEL 2550

Geology of ore body

- “Vents” (superheated)
- Deposition
- Burial
- Uplift
- Number of minerals increased – added by hot solutions permeating ore body
- Erosion (water and ice)
- Franklinite, willemite, and zincite most abundant





Test
EXPLOSIVES
NO SMOKING



**DYNAMITE
WARMER**
(USED TO THAW DYNAMITE
IN COLD CLIMATES)



ORE CAR
FROM A SILVER
MINE
IN CANADA

MADE IN
ENGLAND
BLASTING LINE

**DYNAMITE
DETONATORS.**











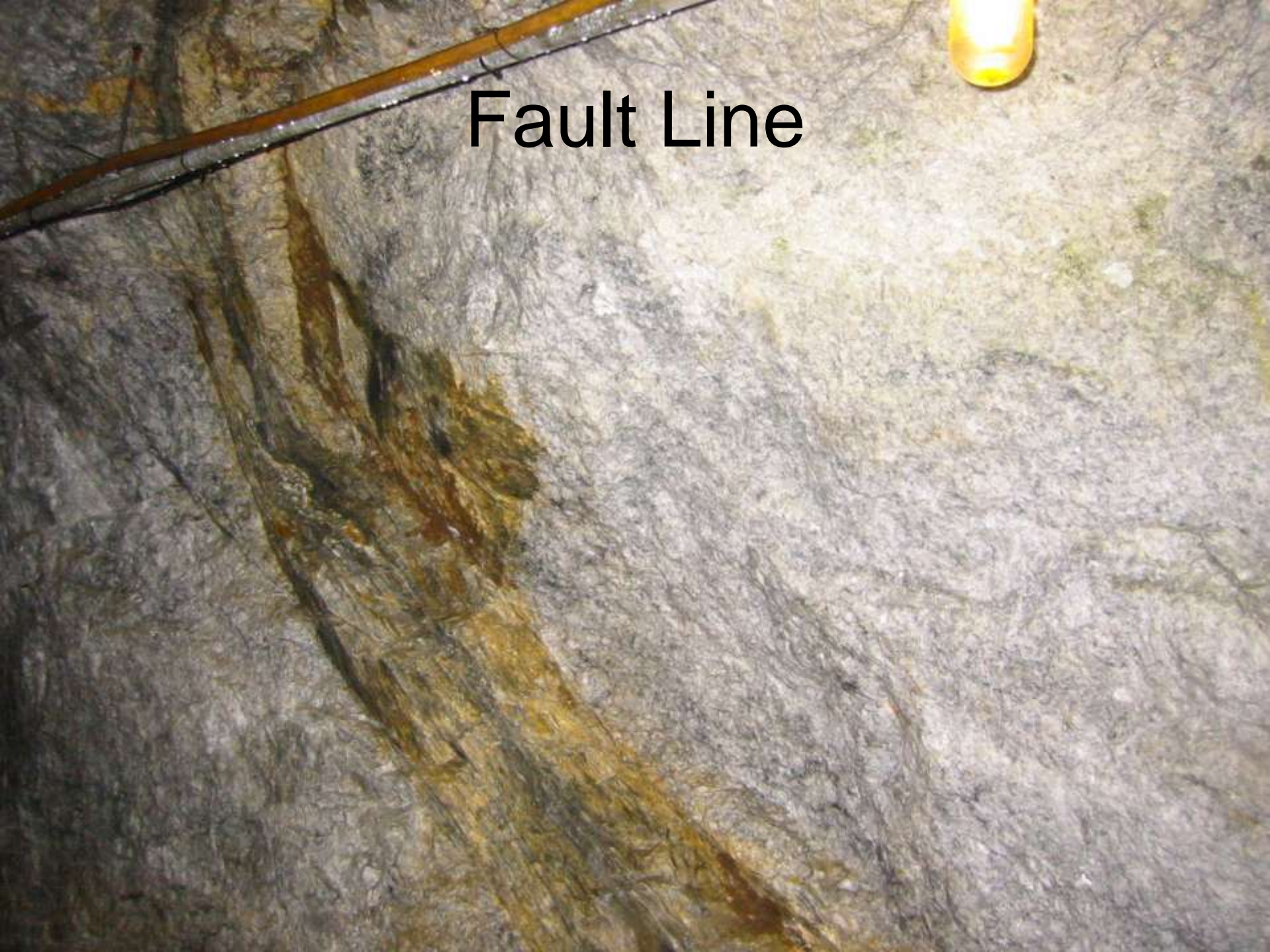


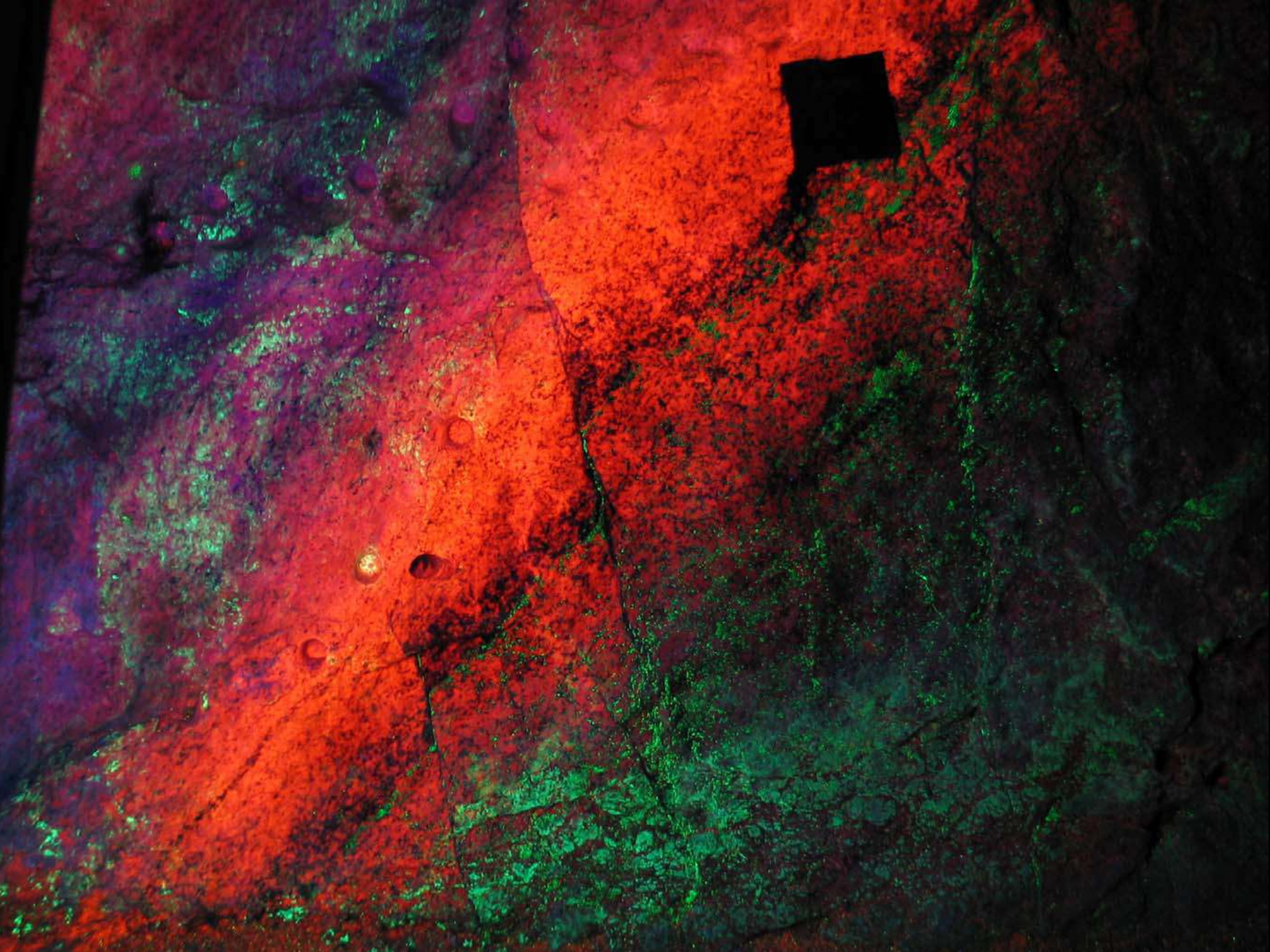






Fault Line





Outside The Museum



**NO
ADMITTANCE
BEYOND
THIS POINT
WITHOUT
TOUR GUIDE**

RAIL ROAD CROSSING
LOOK OUT
FOR THE
LOCOMOTIVE

NOTICE: All fossils are protected
and reserved to the State of Indiana
and are owned by the State of Indiana.
No one is allowed to remove them from the
site without the permission of the State.

PETRIFIED (SILICIFIED) WOOD
Indonesia
This long fossil log, from a tropical hardwood tree of unspecified species, is of Miocene age
(5.3 - 23.8 million years ago.) The original wood has been completely replaced by microcrystalline
quartz (chalcedony) to produce the "rice-kernel" mass you see here. Logs generally become petrified
when they are buried in sediment during floods, whereupon water flowing through the sediments
gradually infiltrates the wood and replaces it with quartz.
- Donated by Treasures of the Earth, Ltd., Hologgipie, Pennsylvania



NATIVE COPPER
MICHIGAN
GLACIAL FLU...







FYI: No throwing rocks



Exhibit Hall









25

20





Exhibit of Gold and fools Gold







MINERAL
MINTALL

MINERAL
MINTALL

MINERAL
MINTALL

LIBERTY BELL
LIBERTY BELL

GOLD FEVER

Being a **T** rue **A** c-
c- **B** oth **H** orri-
fyi- **A** nd **H** ilarious,
of **A** rt of **H** ea-
l- (a-called) **H** ring
W old




Fluorescence

Molecule

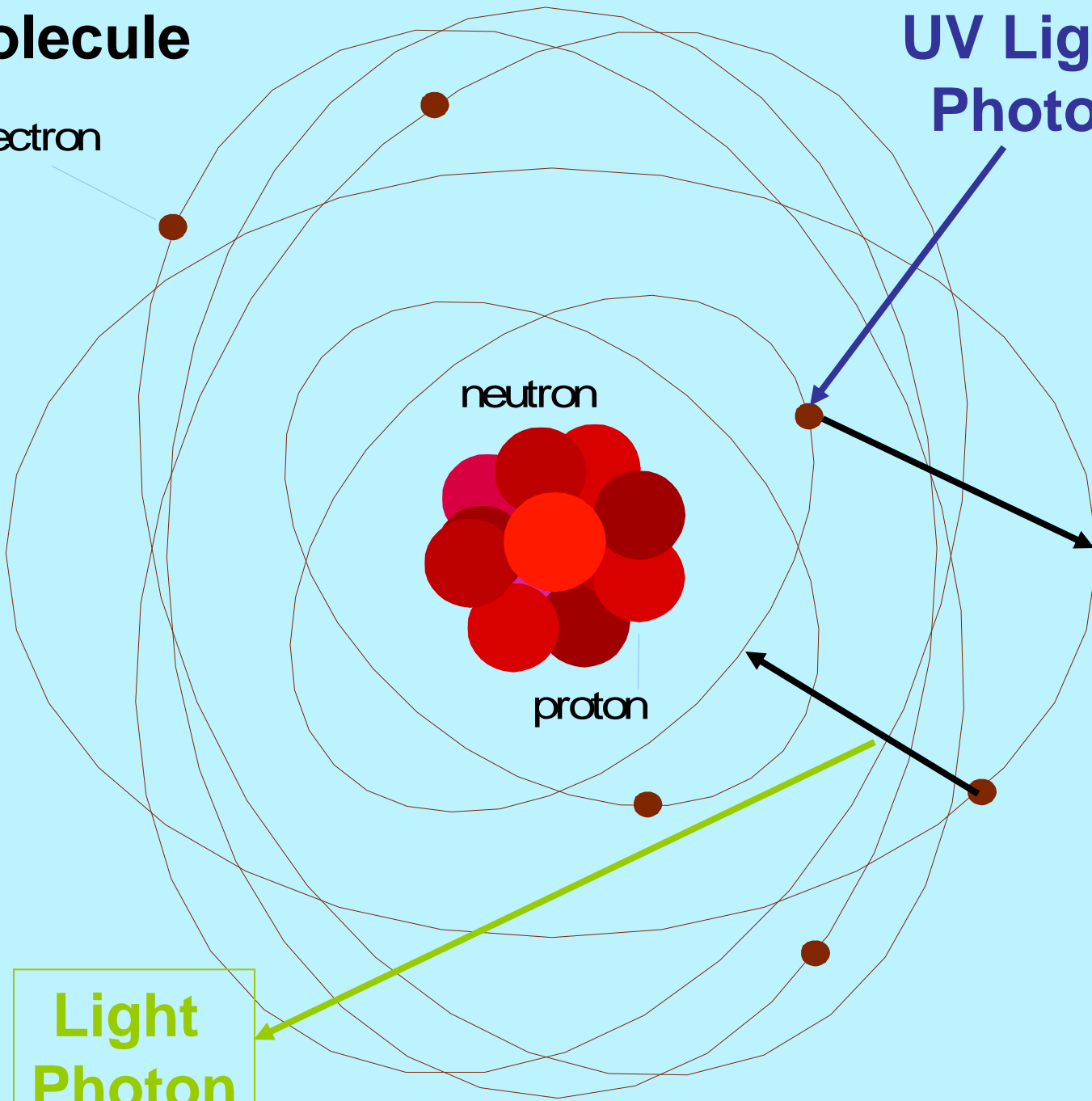
electron

UV Light Photon

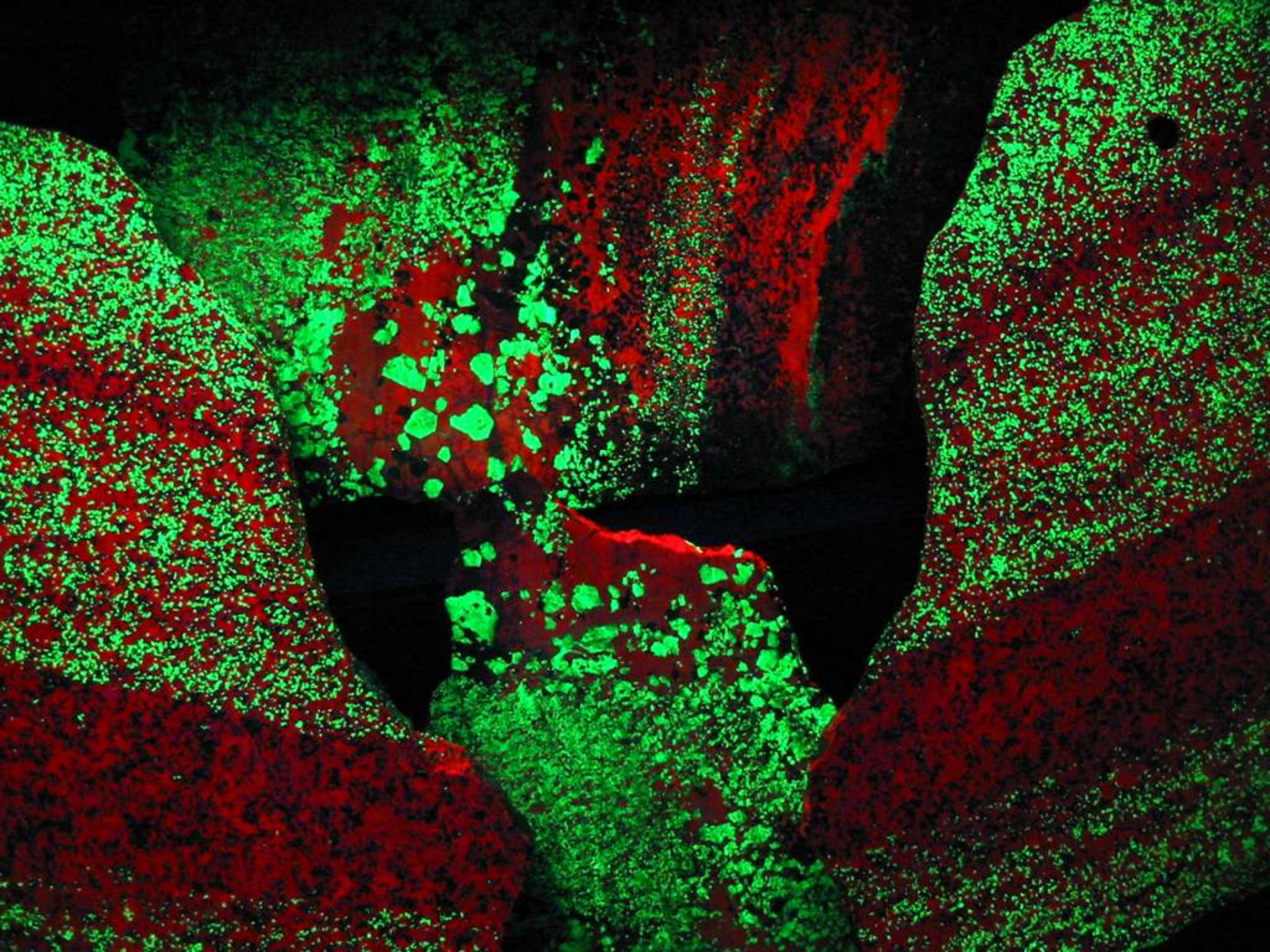
neutron

proton

Light Photon









WOLLASTONITE
CALCITE

WILLEMITE
MANGANAXINITE

WOLLASTONITE
CALCITE

WILLEMITE
CALCITE

MARTE
CALCITE

WOLLASTONITE
MANGANAXINITE
CALCITE

WILLEMITE
CALCITE

WOLLASTONITE
MANGANAXINITE
WILLEMITE
CALCITE

WOLLASTONITE
CALCITE

WILLEMITE
CALCITE

WOLLASTONITE
MANGANAXINITE
WILLEMITE
CALCITE

TURQUOISE
CALCITE

MANGANAXINITE
WILLEMITE

MANGANOSANITE
CALCITE
WILLEMITE

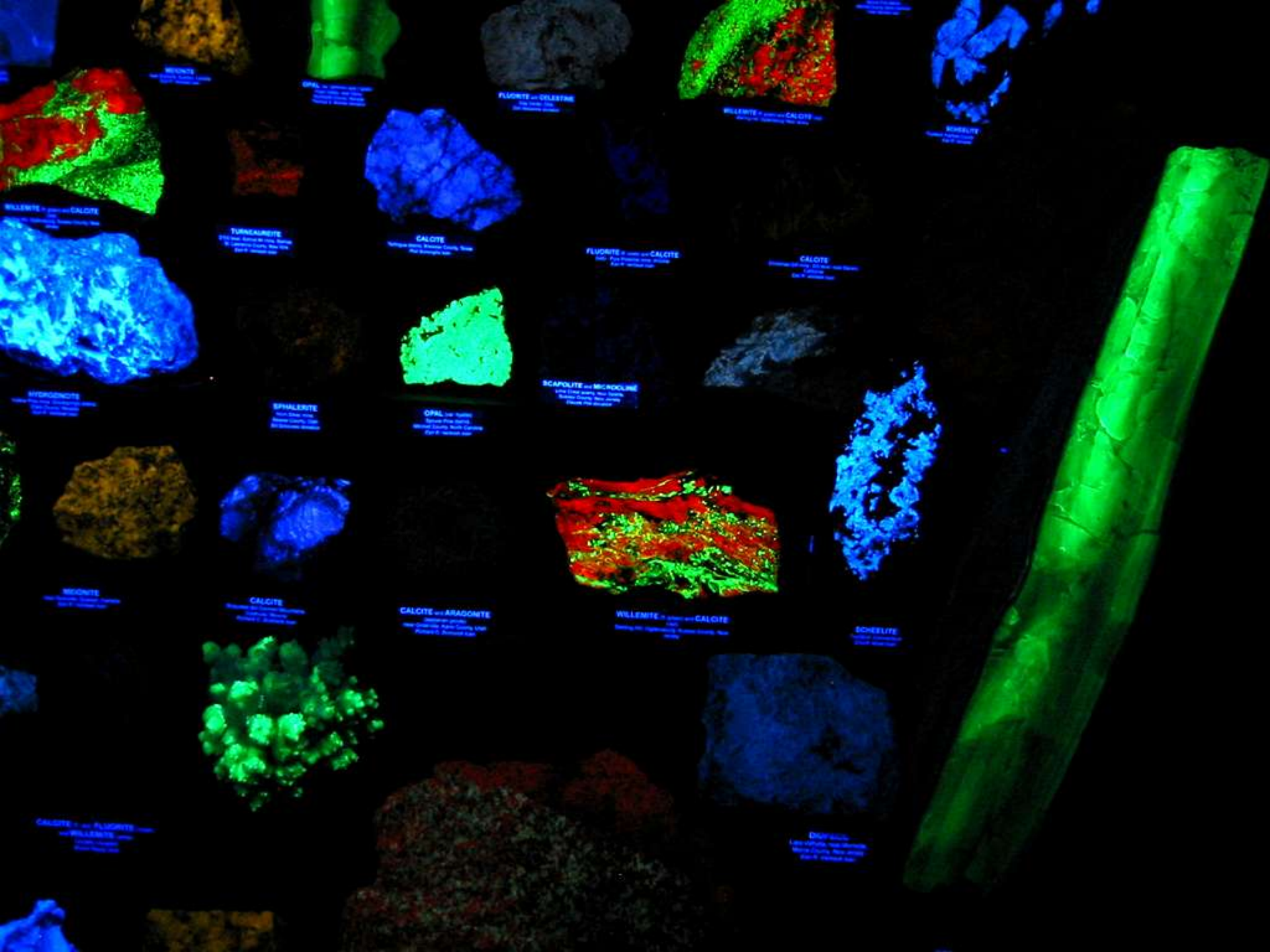
CLINCHEDRITE
MANGANOSANITE
WILLEMITE

MANGANOSANITE
MANGANAXINITE
CLINCHEDRITE
WILLEMITE

WOLLASTONITE
WILLEMITE, CALCITE
MANGANOSANITE
CLINCHEDRITE

MANGANOSANITE
CLINCHEDRITE
WILLEMITE

MANGANOSANITE
MANGANAXINITE



MINITE
1897-1898
1897-1898
1897-1898

OPAL
1897-1898
1897-1898
1897-1898

FLUORITE w/ CELESTINE
1897-1898
1897-1898

WILLEMITE w/ CALSITE
1897-1898
1897-1898

WILLEMITE
1897-1898
1897-1898

WILLEMITE w/ CALSITE
1897-1898
1897-1898

TURKALUNITE
1897-1898
1897-1898
1897-1898

CALCITE
1897-1898
1897-1898
1897-1898

FLUORITE w/ CALSITE
1897-1898
1897-1898

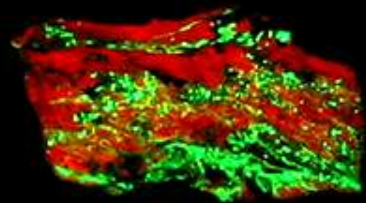
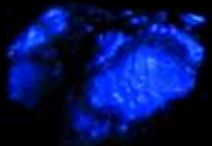
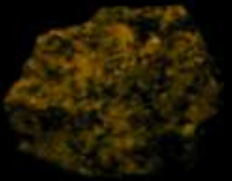
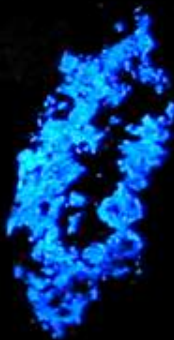
CALCITE
1897-1898
1897-1898

HYDROZONITE
1897-1898
1897-1898

SPHALERITE
1897-1898
1897-1898

OPAL
1897-1898
1897-1898

SCAPOLITE w/ MICROCLINE
1897-1898
1897-1898



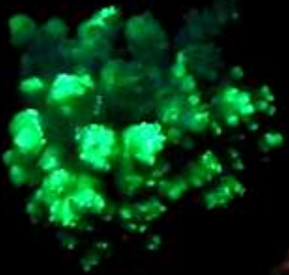
SCHERLITE
1897-1898
1897-1898

MINITE
1897-1898
1897-1898

CALCITE
1897-1898
1897-1898

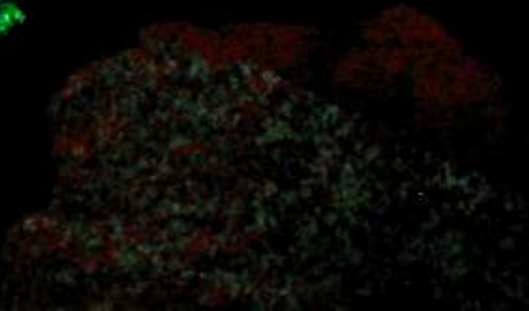
CALCITE w/ ARAGONITE
1897-1898
1897-1898

WILLEMITE w/ CALSITE
1897-1898
1897-1898



CALCITE w/ FLUORITE w/ WILLEMITE
1897-1898
1897-1898

DORVILLE
1897-1898
1897-1898



Go See it!



Nate's Minerals

Agrellite

Calcite

Calcite

Calcite

Chalcedony

Fluorite

Fluorite

Glass (Cluette)

Ruby (Corundum)

Norbergite

Sphalerite

Tremolite

Willemite

Wollastonite

Scorpion

Scorpion

Shark's Tooth

Opal

Backup charts

Sterling Hill Mining Museum

30 Plant Street Ogdensburg, N.J. 07439

WEST SHAFT

SHAFT STATION

RAINBOW ROOM

PASSAIC PIT

EAST SHAFT HOIST HOUSE

LANDMESSER TUNNEL

EDISON TUNNEL

ROCK DISCOVERY CENTER

JOE CILEN STREET

EXIT

PAUL CHRISTIANSEN PAVILION

SHIPPING BINS

CONCESSION BUILDING

MINE OFFICES

EXHIBIT HALL

PLANT ST.

EAST SHAFT

SURFACE STATION

GEOTECH CENTER

MINERAL COLLECTING

RAMP



